



THE RAVENALA ATTITUDE

Energy and Water Consumption

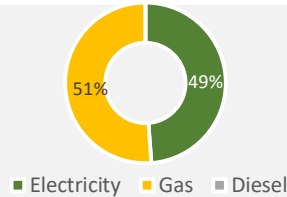
AUGUST 2024

Energy

Water

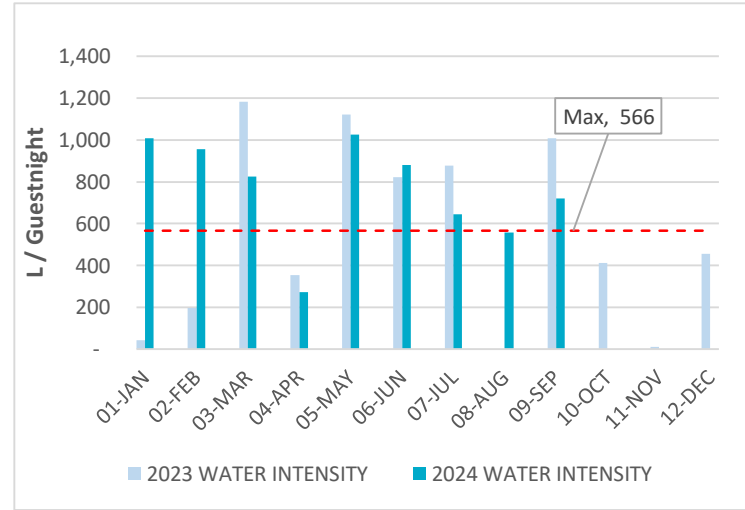
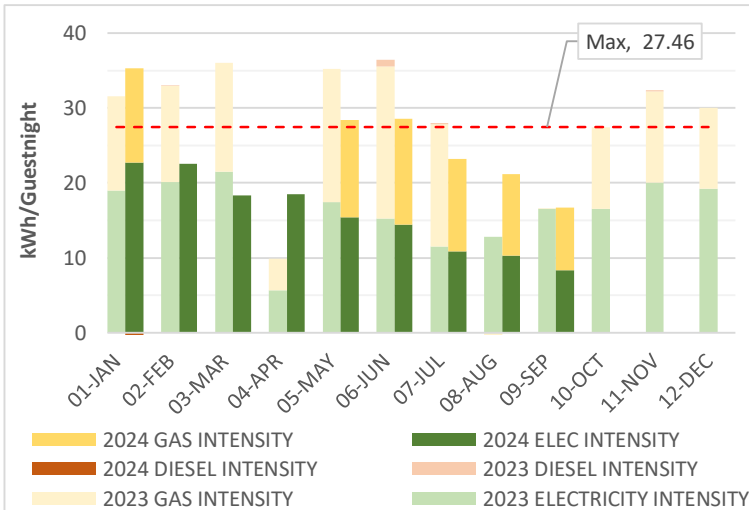
Monthly consumption

401.6 MWh
or
21.14 kWh / Guestnight



10,606 m³
or
558 Lt / Guestnight

Overall Consumption
(Year 2023 used as Reference Year)



Our target for 2024

Now **21.14** kWh / Guestnight
on the right track to reach our target
Target **27.45** kWh / Guestnight

Now **558** Lt / Guestnight
on the right track to reach our target
Target **566** Lt / Guestnight