

LIME
DINNER

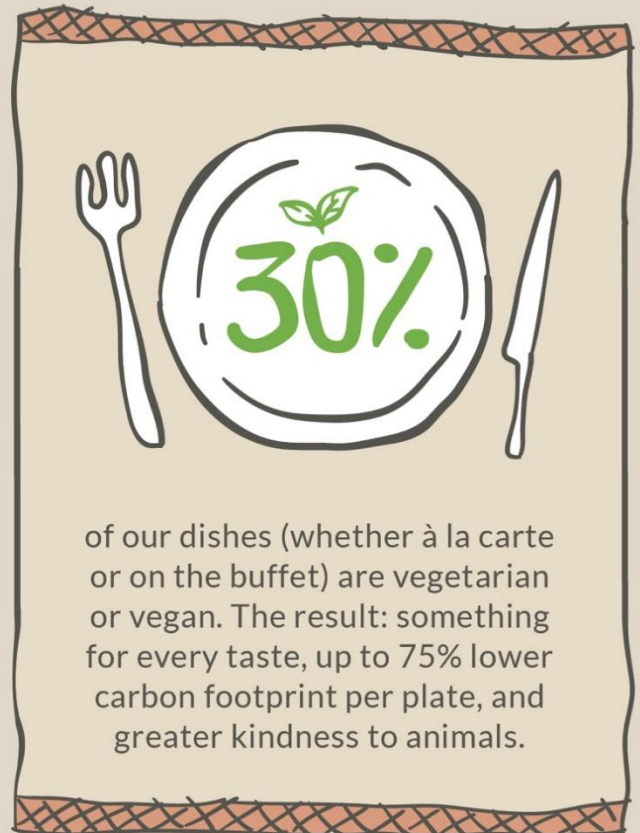
Committed – Right to your plate

As a purpose-led, B Corp certified business, we cook responsibly, with heart and good sense.





52%

of the food and drink on our menus comes from local producers certified **Made in Moris.**



of our dishes (whether à la carte or on the buffet) are vegetarian or vegan. The result: something for every taste, up to 75% lower carbon footprint per plate, and greater kindness to animals.

Look for these symbols:  100% PLANT-BASED  VEGETARIAN

Less waste

We forecast covers, track waste with smart bins, cook to order, and reuse surplus for staff meals. Want to help? Just listen to your appetite - you can always come back for more.

No salmon here

Too many chemicals, too big an environmental impact. We choose fresh, local and more sustainable species instead.



STARTERS

Thon Torché

Thon torché avec vinaigrette au sésame
[FSH, SOY, SSE, SUL]

Rs 490

Sélection de Sushis

Sushi de crabe, sushi tempura de crevette, rouleau de thon
[CRU, MUL, SOY, FSH, SUL, SSE]

Rs 1250

Gyoza

Gyoza de poulet, sauce aux prunes confites
[SOY, SUL, GLU]

Rs 690

Gyoza de légumes avec sauce aux prunes confites 

[SOY, SUL, GLU]
[PLANT-BASED, VEG]

Rs 590

Assortiment de Nigiris

Bâtonnets de crabe, tempura de crevette, thon
[CRU, MUL, FSH, GLU, SOY, SUL]

Rs 540

Crevettes à L'ail

Sauce tomate, fromage mozzarella, crevettes à l'ail
[GLU, MLK, CRU, CEL]

Rs 560

Poulet BBQ

Sauce tomate, fromage mozzarella, poulet, sauce BBQ, oignon, basilic
[GLU, MLK, CEL]

Rs 560

MAIN COURSE

Poisson du Jour

Filet de poisson grillé servi avec beurre teriyaki et légumes, pois verts

[MLK, SOY, FSH]

Rs 810

Poulet

Poulet yakitori poêlé servi avec riz sauté et sauce aigre-douce

[SOY, SSE]

Rs 800

Crevette

Crevette géante grillée accompagnée de légumes assortis, vinaigrette au beurre ponzu et mousseline verte

[MLK, SOY, CRU]

Rs 1400

Boeuf

Filet de boeuf grillé avec purée de pommes de terre aux d'huile de truffe, légumes de saison et sauce

[BEF, GLU, MLK]

Rs 1400

Légumes

Yakitori de légumes grillés, riz frit aux légumes

[VEG, SOY]

Rs600

DESSERT

Perles de Tapioca au Lait de Coco

Perles de tapioca au lait de coco, noix

[NUTS]

[PLANT-BASED, VEG]

Rs 390

Gâteau au Chocolat

Gâteau au chocolat noir moelleux avec du gingembre, servi avec coulis de baies rouges et glace à la vanille

[MLK, EGG, GLU]

Rs 390

Assiette de Fruits

Assiette de fruits tropicaux accompagnée de sorbet

[PLANT-BASED, VEG]

Rs 390

Les prix sont en roupies mauriciennes.

Tous les prix incluent la taxe de 15% et excluent les 10% de pourboires qui sont à la discrétion du consommateur.

DIETARY PREFERENCES

Whether you're vegetarian, fully plant-based, or simply curious, we warmly invite all our guests to explore our delicious plant-powered dishes. And there are *plenty* of good reasons to try them: thoughtfully crafted and full of flavours, these options offer the same exceptional quality and taste—while reflecting our commitment to a kinder planet and our goal to serve at least 30% vegetarian and plant-based dishes. Look for our  and  labels on the dishes to join our sustainable journey, one tasty bite at a time.

SUITABLE FOR VEGETARIANS 
SUITABLE FOR PLANT-BASED 

[VEG]
[PLANT-BASED]

FOOD ALLERGENS DISCLAIMER

We list the primary allergens present in each dish using standard abbreviations. However, despite our best efforts, trace amounts of allergens may still be present upon the manufacturing of some ingredients that we use. Our kitchen uses a wide range of ingredients which may contain or come into contact with common allergens, including but not limited to: gluten, peanuts, tree nuts, dairy, eggs, soy, fish, shellfish, etc...

If you have a food allergy or dietary restriction, please inform the Restaurant Manager or Chef before placing your order.

SOYA	[SOY]
CELERY	[CEL]
NUTS	[NUT]
PEANUTS	[PNT]
MUSTARD	[MTD]
LUPINS	[LUP]
SULPHATES	[SUL]
SESAME	[SSE]
GLUTEN	[GLU]
MILK	[MLK]
EGG	[EGG]
CRUSTACEAN	[CRU]
FISH	[FSH]
MOLLUSK	[MLS]
ALCOHOL	[ALC]
PORK	[PRK]
BEEF	[BEF]